

ASSEMBLY INSTRUCTIONS FOR:

CLOUD MEMORY

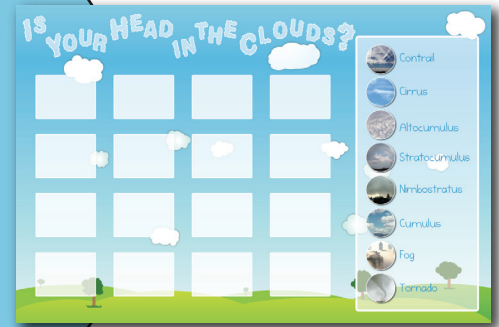
DIFFICULT

SUPPLIES:

- Scissors
- Laminator
- Magnetic sheet metal cut into 16 3.5" x 2.5" rounded edge rectangles
- 16 Circle magnets (1" diameter, 2.5 cm thick)

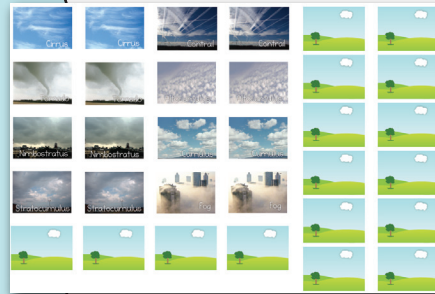
1

Print the Game board. Recommended size is 24 by 36. Adhere the print to a foam core board. I use Scotch Super 77 adhesive spray, but any glue should work.



2

Print the Game pieces and cut them out. Cut size should be close to 5 by 3.5 inches.



3

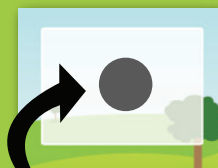
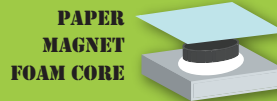
Sandwich one piece of cut sheet metal between a front and back game piece, with the printed sides facing out. It may be useful to use a loop of tape to hold the 3 pieces together. Laminate the piece like this, then cut it out and trim with rounded corners.



4

Optional: Hide the magnet in a piece of foam core by cutting a circle through the core, inserting the magnet, then covering with paper.

Attach a magnet to the center of each blank space on the game board using strong adhesive. The magnet holds the pieces for the game and also spaces the pieces away from the board so they are easier to grab.



MAGNET

YOU'RE FINISHED!

ASSEMBLY INSTRUCTIONS FOR:

CLOUD MEMORY

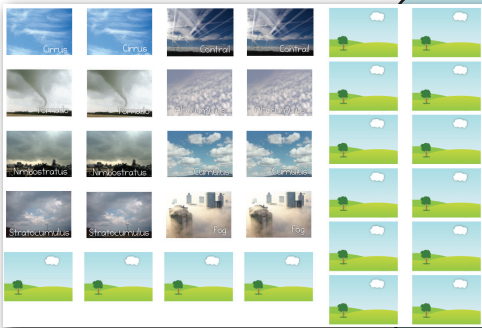
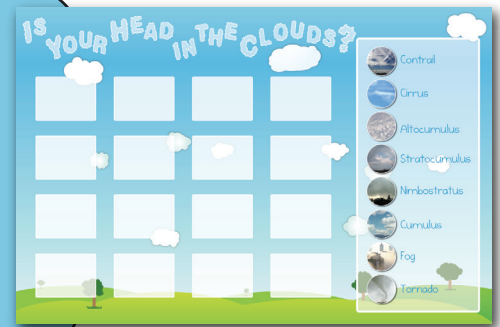
EASY

SUPPLIES:

Scissors
Laminator
Velcro (white or clear dots work best)

1

Print the Game board.
Recommended size is 24 by 36. Adhere the print to a foam core board. I use Scotch Super 77 adhesive spray, but any glue should work.



2

Print the Game pieces and cut them out.
Cut size should be close to 5 by 3.5 inches.

3

Choose one Front and one back to laminate together. Use a loop of tape to hold them together during the laminating process.

FRONT



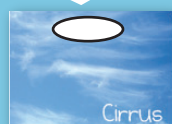
BACK



4

Place a piece of Velcro on the top middle of the front of your laminated pieces.

VELCRO



5

Place the other side of the Velcro on the game board in the corresponding location.

YOU'RE FINISHED!